

# The MAINSPRING

A Monthly Publication from  
Southwestern Chapter 15 of the  
National Association of  
Watch and Clock Collectors

## Contents

President's Message.....	1
Upcoming Events .....	2
Did you know?.....	2
May Program.....	3
Cool Clock Collecting .....	3
Spot a clock .....	4

## Save these 2015 dates

### June 17<sup>th</sup> - 20<sup>th</sup>

Clocks, Watches & Trains – Railroad Horology  
Entertaining and educational, with great programs and speakers  
NAWCC National Convention  
Chattanooga, TN

### June 27<sup>th</sup>

Chapter 15 Craft Contest  
10 a.m. – noon  
Pok-e-Jo's – 2121 Parmer, Austin

### July 12<sup>th</sup>

6:00 p.m.  
NAWCC Webinar  
"On the Clock: Changing the Industrialized World"  
Kim Jovinelli

### July 25<sup>th</sup>

Program - Turn the Beat Around  
Ken Reindel; 10 a.m. – noon  
Pok-e-Jo's – 2121 Parmer, Austin

## Current Board Members

President – Ken Reindel  
[President@nawcc-chapter15.org](mailto:President@nawcc-chapter15.org)  
Vice-President – Jay Holloway  
[VicePresident@nawcc-chapter15.org](mailto:VicePresident@nawcc-chapter15.org)  
Treasurer – Don White  
[Treasurer@nawcc-chapter15.org](mailto:Treasurer@nawcc-chapter15.org)  
Secretary – Pat Holloway  
[Secretary@nawcc-chapter15.org](mailto:Secretary@nawcc-chapter15.org)  
Director of Programs – Gary Sertich  
[Programs@nawcc-chapter15.org](mailto:Programs@nawcc-chapter15.org)

## President's Message

Dear Members,

As I compose this message, I have a radar map open on another screen watching tonight's line of storms approach. As you well know, it's been a very long month of record-breaking weather events here in central Texas. One of the local weather reporters characterized our area as "...a low-lying desert punctuated by periodic floods." This month would certainly lay claim to that description. Apparently the jet stream has dropped much lower than normal, bringing cool air out over the warm gulfstream. When the two collide, unpredictable events occur.

Meanwhile in our neighboring communities, there have been some unbelievable tragedies associated with these weather events. Most of us have heard the details involving flash flooding, astounding rescues, and alas missing loved ones throughout Texas. These include the story of a fully occupied multiple-family vacation home lifted from its pillars and washed down the Blanco River. All we can do is pray for those whose lives have been impacted by these historic events, and hope that all of our members are safe.

With all of that, one highlight is that the lake will likely be over 665ft by the end of the week, within 15ft of full—a 36ft rise since our last Newsletter! This is certainly the highest level since March 2011 when it crossed this mark on its rapid fall towards the seemingly endless Texas Drought of 2011. We remember the resulting disastrous wildfires including the Bastrop fire causing loss of life, destroying 1600 homes, and marking the most catastrophic wildfire in Texas history. It certainly has been alarming watching our area go from historic drought to historic floods. Many folks who have lived here a lifetime cannot remember anything like it. At least for now in Central Texas we are in better shape with respect to the drought—which now seems to have moved to the California region.

For our last meeting, we were treated to Dulen Lee's report on his English Fusee Clock Restoration. As you might recall, Dulen has a history of being quite a craftsman. He produces beautifully crafted replacement brass weights for various clocks. His weights are finely designed, fabricated from high quality materials, and finished to perfection. Dulen also enjoys the overall restoration (from the movement out) of English (and other) fusee style movements. During his presentation, Dulen described the replacement of the dial feet, restoration of the dial, and outstanding case and finish repair which actually salvaged the majority of the original finish. Overall we were in awe over the finished product that Dulen proudly presented at the end of his step-by-step description. Thank you, Dulen, for a great job in recording your progress, then organizing and presenting it to us. (continued on page 2)

**President’s message** – continued

**Upcoming Programs.** We’ve had a really good run of interesting monthly programs. We’re going to take a rest from programs for June and instead have our own Craft Contest much like we did last year. Bring your best example of your passion and craft, and be prepared to present it briefly. It should be a lot of fun!

Are you planning on going to the National June 17-20? This year it will be in Chattanooga, TN. We remember when it was held there several years back and it was great! It once again promises to be an interesting show in a setting with plenty of things to do during the off hours—such as the Tennessee Valley Railroad Museum and Steam Locomotive Excursion. I am sure it will be worth the trip once again!

**NAWCC Book Auction.** If you haven’t yet heard, the NAWCC Library and Research Center is holding a book auction during the month of June. It can be found at the [4Sale.nawcc.org](http://4sale.nawcc.org) website. This auction will feature horology-related books with proceeds going to the library’s fund. The books in the sale are largely donated items, which couldn’t be used. Some were previously part of the library’s collection. Many are out of print and tough to find anywhere else. So if you are looking for interesting and unique horological books, go to [4sale.nawcc.org](http://4sale.nawcc.org) anytime during the month of June, and support the NAWCC Library!

and to learn the story behind the project. Please call or email Jay Holloway with any questions. (512-294-7371 or [Jay@hollowaytrading.com](mailto:Jay@hollowaytrading.com) )

**July 12<sup>th</sup> – NAWCC webinar – 6 p.m.**

Kim Jovinelli, the NAWCC Museum’s new Curator of Collections is the speaker for July’s webinar – On the Clock: Changing the Industrialized World. This will not only be an exhibit walkthrough, but also a look at how the work day has changed over the years, the advancements that had to happen to get us where we are today, and what the future could look like as technology progresses. A registration link and links to previous programs are available on the NAWCC website. (<http://www.nawcc.org/index.php/workshops/webinars>). Several of the programs are also now available on the Museum’s YouTube educational channel.

**July 25<sup>th</sup> – Chapter 15 Program**

Continuing our focus on practical repair skills, in July Ken Reindel will be speaking on “Turn the Beat Around: Diagnosing Clock Issues from Beat.”

**Did you know?**

During last month’s meeting, several attendees mentioned that they would like to learn more about where to find things on the NAWCC website. Thanks to Don White for suggesting that we include a brief tip in each newsletter on items available on the various horological sites. If you have suggestions that you think others would benefit from, or enjoy, please call or email Pat (512-252-3881 or [patricia.w.holloway@gmail.com](mailto:patricia.w.holloway@gmail.com))

So, did you know...various people have spent months photographing and documenting many of the museum items. This information has been uploaded and you can search the museum collection without having to leave home! On the NAWCC website, select the Museum tab, then click the Search the Collection picture on the right side of the screen. By selecting either Search, or Advanced Search, you can enter key words and search the collection to return all references, or only those with photographs. For instance, if I enter the word Ingersoll, there are 165 results that include watches, advertising and ephemera. If I opt for “Items with Images Only,” there are 141 results. That’s enough to keep me busy for a while! If you’re feeling adventurous, you can select Random Images. Take a few minutes to check out all of it here: <http://nawcc.pastperfectonline.com/> then just sit back and enjoy!

Treasurer’s Report	
<b>Chapter Account</b>	<b>\$7,757.96</b>
<b>Inc:</b> Dues and donation	40.00
<b>Exp:</b> Newsletter	-11.91
<b>Closing Balance</b>	<b>\$7,786.05</b>
<b>Regional Account</b>	<b>\$3,563.60</b>
<b>Exp:</b> Donation - National door prizes	25.00
<b>Closing Balance</b>	<b>\$3,538.60</b>

**Upcoming Events**

**June 27<sup>th</sup> – Chapter 15 Craft Contest**

As Ken mentioned, June 27<sup>th</sup> will be our Chapter 15 Craft Contest. Last year’s contest included a wide variety of horological items created and restored by Chapter 15 members. If you entered an item last year and it wasn’t one of the 3 winners, the item may be entered again this year. We’re looking forward to this opportunity to showcase your work

## May Program

As Ken mentioned in the President’s Message, Dulen Lee gave a very informative program on restoring a fusee clock last month. Having been stationed in England for some years, Dulen had the opportunity to see many beautiful fusee clocks and gained a deep appreciation for their construction.

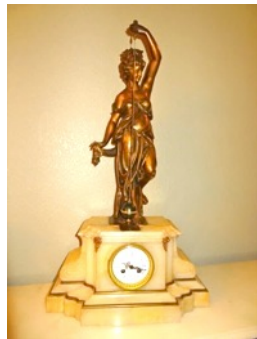


During his presentation, Dulen walked us through the work required to restore his clock that included a mechanically sound movement. The movement required cleaning, polishing pivots and pivot holes and adjustments to the verge so that it runs accurately.

Next, Dulen turned his attention to the rest of the clock that was sadly in need of some spiffing up as evidenced by the dial pictured here. He replaced the dial feet to match the movement, and the dial was shipped off for restoration. This style clock often has damage on the hinge side of the door, and this one was no exception. Dulen repaired the cracked wood and polished the case and bezel before remounting the movement. The beautiful, restored clock now keeps perfect time in Dulen’s home. Thanks, Dulen for sharing your clock and restoration story!

## Cool Clock Collecting

Do you enjoy clocks, but not the ticking or chiming? If this “sounds” like you – or someone in your household – perhaps collecting conical pendulum clocks is for you. Unlike the silent torsion pendulum clocks where the spring works by twisting, the bob of a conical pendulum is hung from a fixed pivot and moves in a circle with the string or rod tracing a cone shape. These pendulums have been around for several hundred years. English scientist Robert Hooke first studied the conical pendulum around 1660 as a model for the orbital motion of the planets. In 1673, Christiaan Huygens (mentioned in last month’s Cool Clock Collecting feature on Dutch clocks) studied this type of pendulum with respect to centrifugal force. However, it seems that it wasn’t until the 1800s that the pendulum was utilized for timekeeping.



If you like ornate clocks, you can find conical pendulums with silk suspensions on some French clocks, such as this figural clock on an alabaster base.

However, if you prefer something less ornamental, or are inclined to American clocks, the Briggs Rotary by Welch or some of the Kroeber Noiseless Rotary clocks could fit the bill. Following are a few photographs.

*Right  
Briggs Rotary  
Welch Clock*

*Below  
Noiseless Rotary #4  
and  
Noiseless Rotary #1  
both  
Kroeber Clock*



If you would like to learn more about conical pendulum clocks and the various patents, there is an excellent article by Charles Terwilliger in the April 1978 *Bulletin*. And, if you’re interested in the mathematics of these pendulums, you might enjoy Dr. Fred A. Beeler’s article in the October 1976 issue.

---

## Spot a clock

Although we probably don't normally think of timepieces when someone says Hong Kong, on a recent trip Don White discovered an interesting tower clock. A plaque at the site indicates that this clock and tower are all that remain of Kowloon-Canton Railway terminus at Tsim Sha Tsui. The clock tower was erected in 1915 and the terminus began operation in 1916. The terminus building was demolished in 1978 after the removal of the terminus to Hung Hom in 1975. Standing 44 meters tall and topped with a 7-meter lightning rod, the clock tower is a familiar sight near Victoria Harbour.



The clock tower was designated as a monument in 1990 and is protected under the Antiquities and Monuments Ordinance.

The clock bell was donated to the government for public display at the Clock Tower in 2010 to commemorate the 100<sup>th</sup> anniversary of the commencement of train service in Hong Kong. It had been cast in 1919, and was part of the electric clock mechanism in the clock tower,

beginning service in 1921. Except for a period during the Japanese occupation of Hong Kong between 1941 and 1945, the clock was in use until 1950. After being displayed in various locations over the years, the bell was returned for display.

Not only did Don spot the clock tower, he also spotted a display of Ingersoll watches. Unfortunately, they weren't of the famous Ingersoll "Dollar Watch" variety, so he decided to pass on one of these souvenirs.

